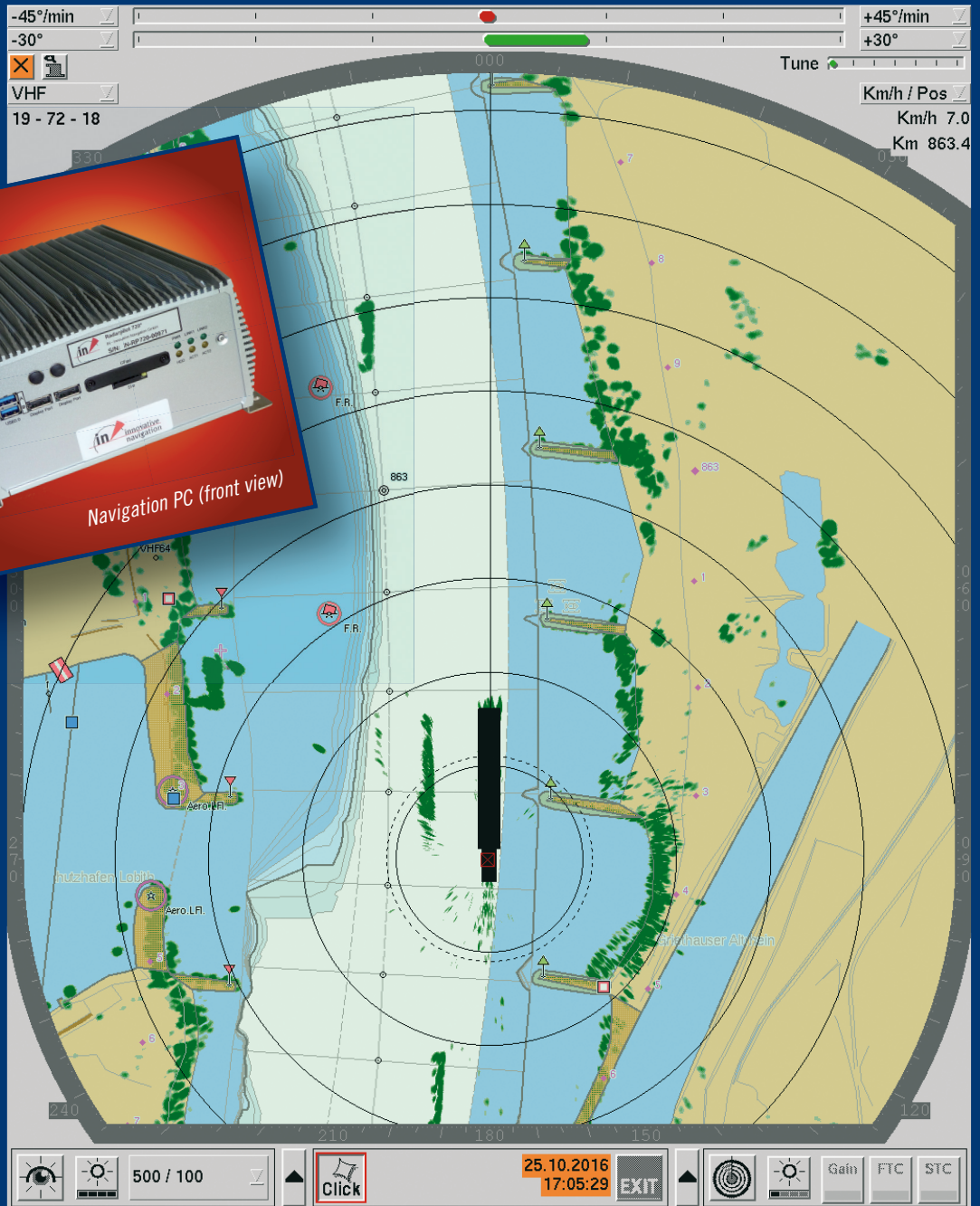


# RADAR*pilot* 720° LE



Navigation PC (front view)

**RADAR*pilot*720° LE** is a type tested Inland-ECDIS navigation system providing a cost-effective entry opportunity to the use of radar chart overlay. Based on the established and reliable technology of RADAR*pilot*720°, the **LightEdition (LE)** comprises the functions as follows:

- ▶ Integration of radar, GPS and electronic river chart in one viewport
- ▶ Display of AIS data
- ▶ Trip computer
- ▶ Storing and export of screenshots

- ▶ Display of VHF channels relevant
- ▶ Easy upgrade to RADAR*pilot*720° full version
- ▶ Compact dimensions 24 x 12 x 28 cm
- ▶ On-board power supply (24 V DC) or standard AC power supply (230 V AC)

The system runs utterly quiet on a state-of-the-art industrial PC without wear parts as there are rotating hard disk or fan.



[www.innovative-navigation.de](http://www.innovative-navigation.de)

**in-innovative navigation GmbH**

Leibnizstraße 11

D-70806 Kornwestheim, Germany

Phone: +49 (0) 7154 807 150

Fax: +49 (0) 7154 807 154

Email: [info@innovative-navigation.de](mailto:info@innovative-navigation.de)