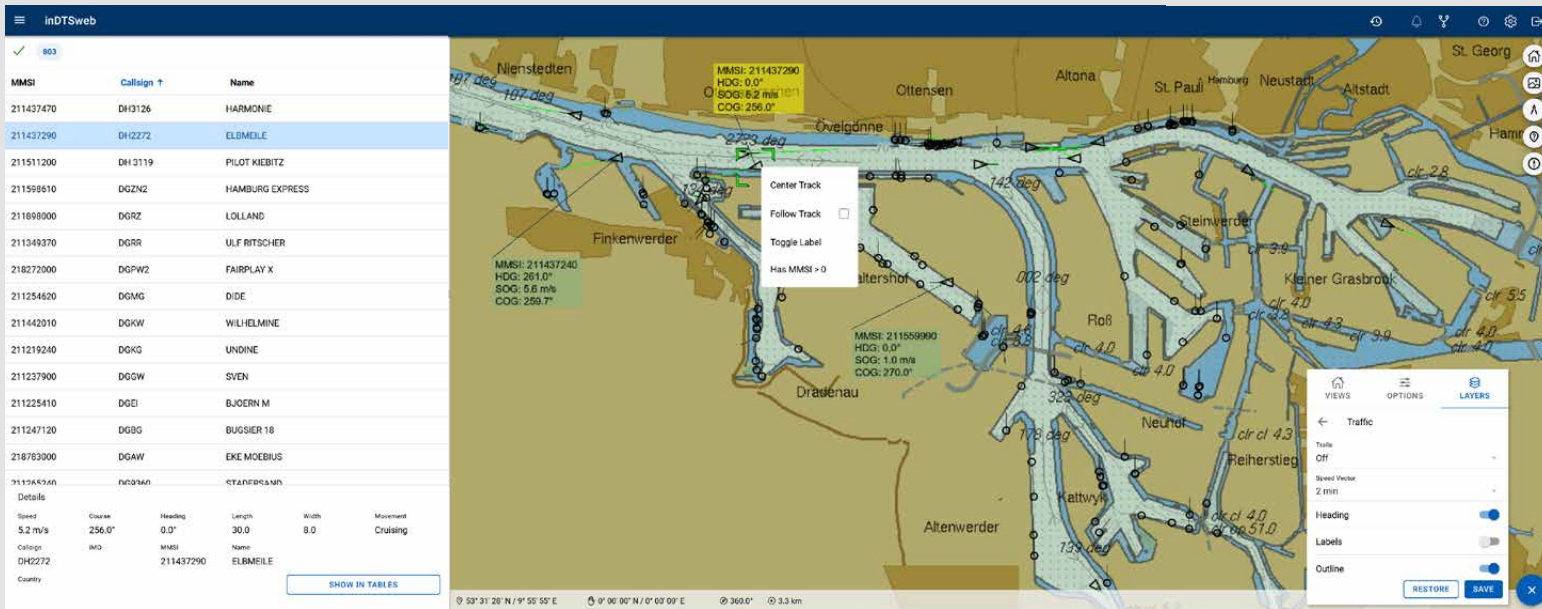


# inDTSweb

Tailor made solutions for web display of traffic data



SECURE **in** SIGHT



▲ inDTSweb for traffic management at the port of Hamburg

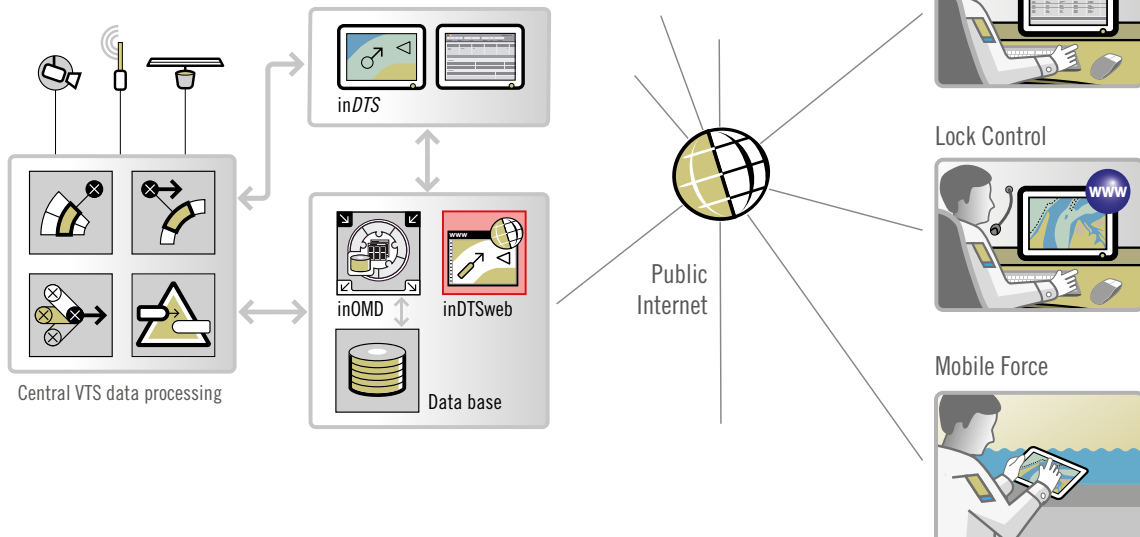
## Combining the information as you need it

The highly configurable display is used worldwide in maritime traffic monitoring systems: at ports, at locks and for offshore installations. The latest concepts for information presentation are the bases for this user friendly and straightforward display solution.

Track data provided by a VTS/CSS system include the possibility to replay historical data. Current information updated in the data base connected can be shown on the traffic view port or as table list. For example, special sections on the waterway are highlighted in the chart by colour and indicate whether a passage of this section is possible or obstructed.

inDTSweb not only presents the actual traffic picture and chart in a customized layout, but also allows lock and voyage planning in an optimal manner. The TRIP PLANNER is in use at tidal rivers with narrow sections to optimize the passage according to draught of a vessel and encounters with other ships.

### Sample configuration



Visualization is offered either in 2D or in 3D mode.

The measurement function works either between two spots on the chart or as continuous distance measure between two moving tracks.

The password protected login allows user specific access to specific functions.

OGC standards assure the embedding of other public services and the integration of further software, since the display follows a layer concept for seamless integration of a variety of additional geo data.

All functions can also be made available on portable units, tablets or mobile phones to be operated in a flexible setup.

# SECURE in SIGHT



## Application

- Networked traffic surveillance
- Voyage planning and trip monitoring
- Incident management
- ETA/RTA coordination
- Pilotage scheduling
- Border control
- Environmental protection
- Coordination of mobile forces
- Traffic management at bascule bridges
- Analysis, document and report management
- Passing traffic image to external parties
- Control of radar functionality

▼ The table list provides detailed information and a colour coded overview

MMSI	Callsign	Name	Lat	Lon	Speed	Course	Heading
212368000	5BCX4	FREEWAY	53° 48' 49" N	9° 22' 14" E	7.0 m/s	339.0°	335.0°
636091722	A8RX9	UNITEDTRISTANDACUNHA	54° 02' 59" N	8° 04' 32" E	0.0 m/s	0.0°	284.0°
21918900	OXUZ2	BLUE ALFA	53° 56' 44" N	6° 20' 30" E	4.1 m/s	322.4°	314.0°
218117000	DETB2	FS ROSTOCK	54° 22' 41" N	11° 59' 45" E	4.7 m/s	344.5°	345.0°
211505970	DC8164	FULDA	54° 26' 10" N	10° 54' 50" E	3.6 m/s	105.9°	104.0°
229095000	9HA3065	SD ROVER	53° 32' 34" N	9° 55' 10" E	0.0 m/s	0.0°	269.0°
235102532	2HCP9	M.O 1	55° 13' 54" N	7° 31' 28" E	11.6 m/s	248.4°	251.0°
211440370	DD4247	STRALSUND	54° 12' 30" N	9° 34' 15" E	0.0 m/s	0.0°	0.0°
219015382	OXLM 2	FOB SWATH 1	53° 58' 51" N	6° 32' 55" E	0.0 m/s	0.0°	279.0°
992111955		MEERWIND PLATFORM	54° 23' 58" N	7° 41' 58" E	0.0 m/s	0.0°	0.0°

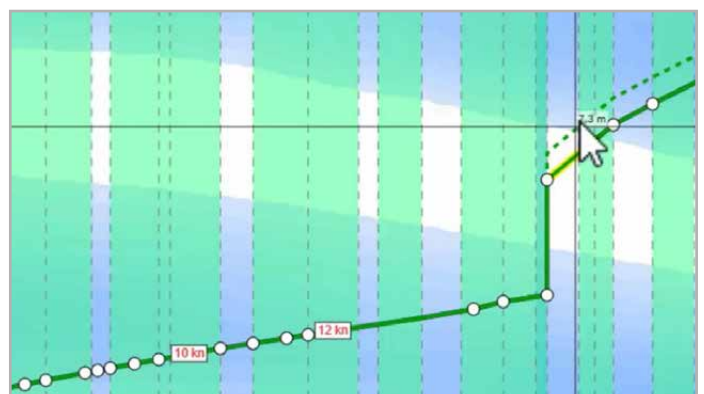
Speed	Course	Heading	Quality	Movement	Length	Width	Transponder Type	Created By	Created At
3.6 m/s	105.9°	104.0°	Confirmed	Cruising	80	10.0	AisTransponderClassA	AisRequester	06-11-2020 18:05
MMSI	Callsign	IMO	Name	Country	Vessel Type				
211505970	DC8164	4007880	FULDA						

[EDIT VESSEL](#)

▼ Display of radar with inDTSweb

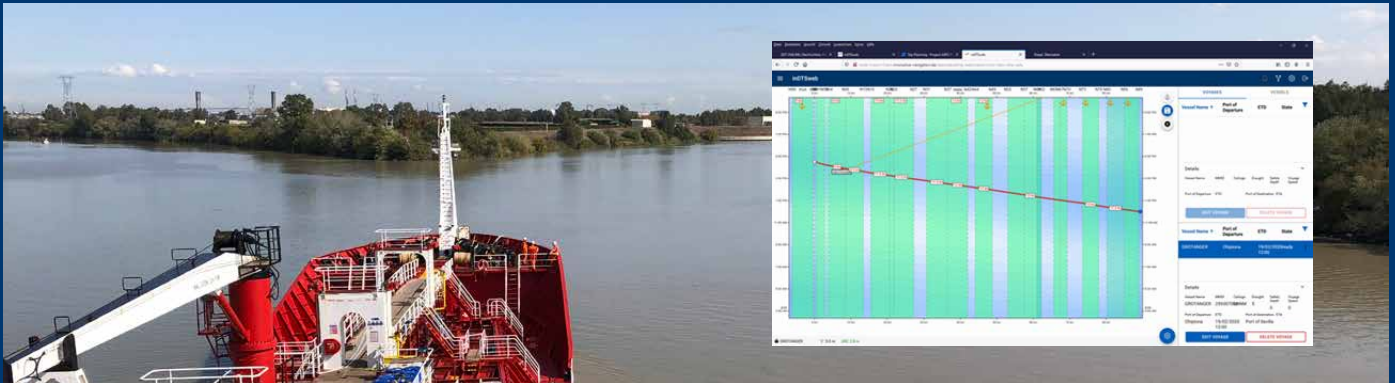


▼ Modifying the path time diagram of a voyage on the viewport





The TRIP PLANNER is used in a traffic centre to plan voyages based on ship calls, bathymetry, locking time, tidal forecast and vessel encounters. The autopanning function offers the route at optimized speed and with suitable stops for the passage of each river section.



## Highlights:

- High level track information from AIS and radar
- Layering of ECDIS chart and other maps (e.g. OpenStreetMap)
- Overlay of satellite data
- Display of radar video
- Overlay of other WMS data
- Indication of tidal dependent depth data on TRIP PLANNER and TRIP MONITOR with respect to the draught of a vessel
- Integration of CCTV and camera control
- Colour coded display of table content
- Automatic report of traffic events
- Measurement function
- Auto complete search function in all tables configured
- Browser based client suitable for LAN and WAN
- Web browser: Microsoft Edge, Firefox, Opera, Safari, Chrome
- Integration of mobile iOS and Android based devices
- Excellent compatibility with all software modules of in-innovative navigation GmbH
- Coordination of mobile forces available
- Seamless integration of existing applications
- Thorough concept of data related access rights

Further information about recent developments on:  
[www.innovative-navigation.de](http://www.innovative-navigation.de)

**in-innovative navigation GmbH**  
 Leibnizstraße 11, D-70806 Kornwestheim (Germany)  
 phone: +49 71 54 807 150  
 fax: +49 71 54 807 154  
 email: [info@innovative-navigation.de](mailto:info@innovative-navigation.de)  
[www.innovative-navigation.de](http://www.innovative-navigation.de)

